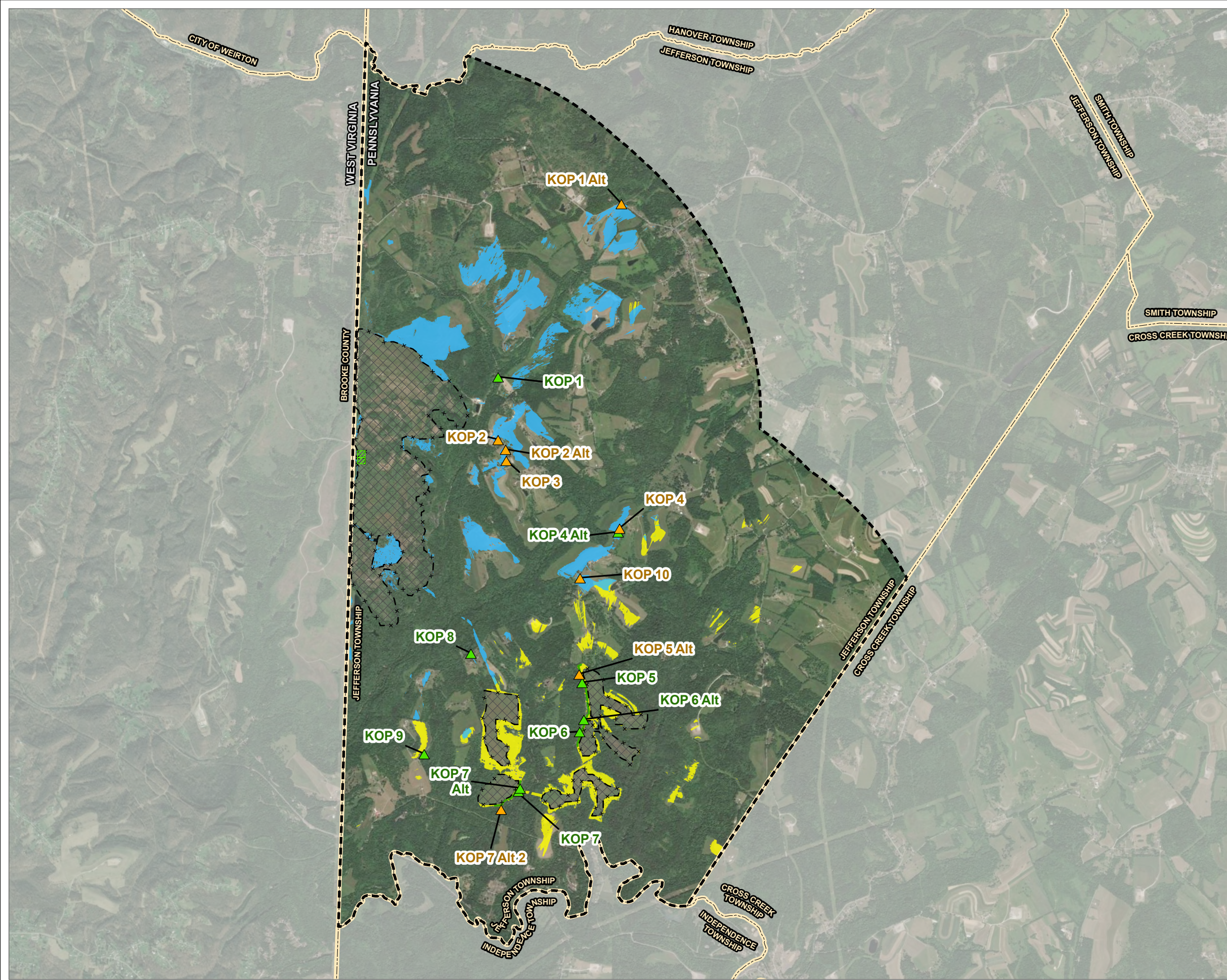


Coordinate System: NAD 1983 StatePlane Pennsylvania South FIPS 3702 Feet, Map Rotation: 0
 - Saved By: MBILLINGS on 10/29/2025, 17:04:30 PM, File Path: T:\PROJECTS\REV_Renewable\606374_CornerstoneSolar\BVISUAL\07_GIS\01_APPX\Revised_Viewshed_Figures_20251017.aprx, Layout Name: Fig1_Cornerstone_Revised_Viewshed_Overview_NorthSouth_Tx17L_20251017



- LEGEND**
- SIMULATION VIEWPOINT
 - PHOTO VIEWPOINT
 - 2-MILE STUDY AREA WITHIN JEFFERSON TOWNSHIP
 - PROPOSED SUBSTATION/SWITCHYARD
 - PROPOSED ARRAY FENCING
 - PROPOSED ARRAY LOCATION
 - PROPOSED LANDSCAPING
 - MUNICIPAL BOUNDARY
 - POTENTIAL VISIBILITY OF NORTHERN PROJECT (PANELS, INVERTERS, FENCE)
 - POTENTIAL VISIBILITY OF SOUTHERN PROJECT (PANELS, INVERTERS, FENCE)

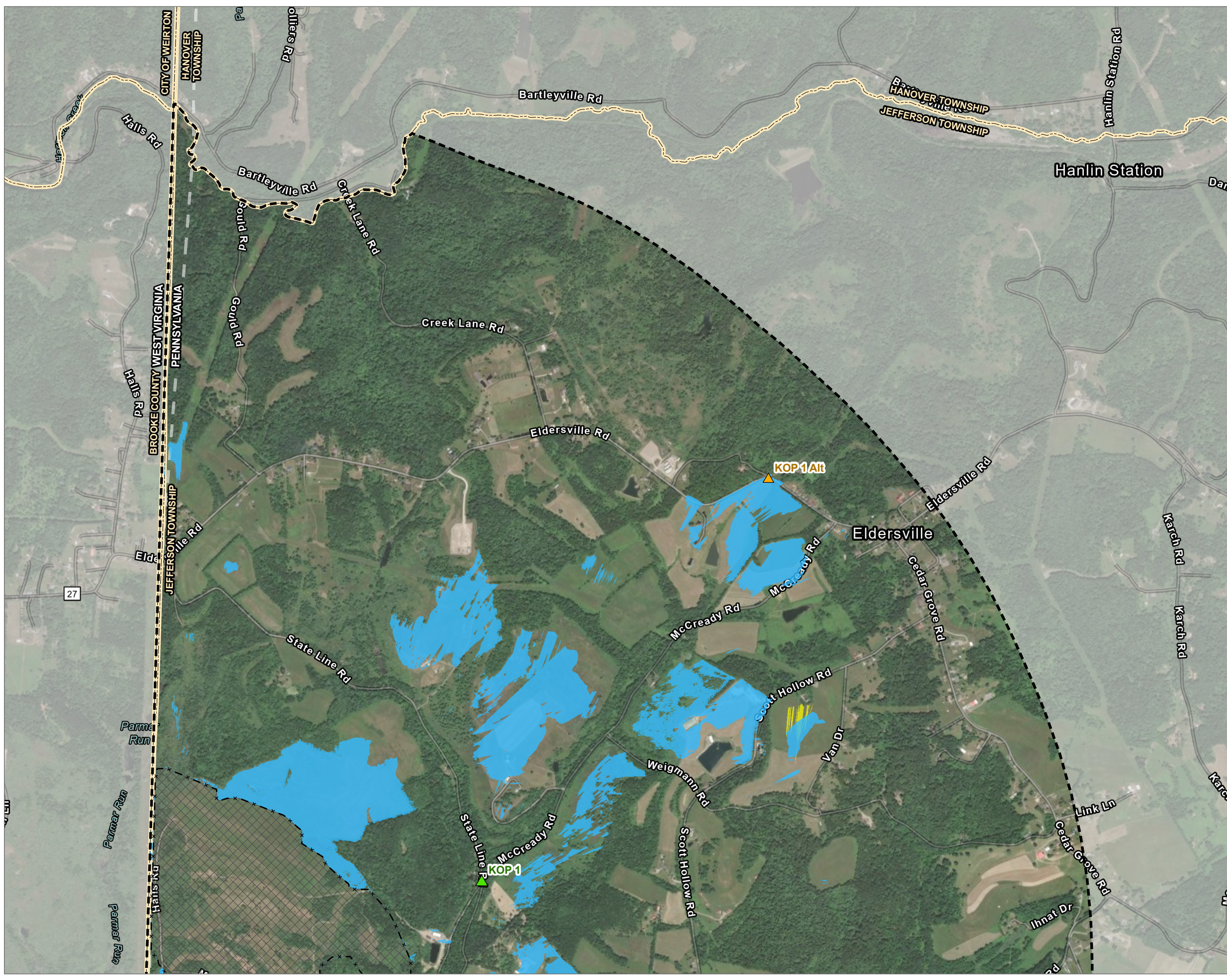
- NOTES:**
1. THIS FIGURE SHOWS VISIBILITY OF PANELS, INVERTERS, AND FENCE ONLY.
 2. LIDAR DATA PROVIDED BY NOAA AND USGS- 2019-2020 USGS WESTERN PA LPC (QL2) AND 2018-2020 FEMA SOUTH CENTRAL WW LPC (QL2).
 3. ASSUMED HEIGHTS FOR ANALYSIS : SOLAR ARRAYS - 15' , INVERTERS - 10', ARRAY FENCE - 8', AND OBSERVER HEIGHT - 5.5'.
 4. THE VIEWSHED MODEL ASSUMES THAT VEGETATION IS OPAQUE AND THEREFORE REPRESENTS A LEAF-ON CONDITION. ALSO, THE MODEL ASSUMES THAT A VIEWER WOULD NOT SEE THE PROJECT IF STANDING IN A STRUCTURE OR AMONGST TREES.
 5. VISIBILITY DOES NOT MEAN THE ENTIRETY OF PROJECT WILL BE SEEN. THE MODEL DOES NOT ACCOUNT FOR THE LIMITATIONS OF HUMAN VISION AT A GREATER DISTANCE OR ATMOSPHERIC CONDITIONS THAT MAY CAUSE REDUCED VISIBILITY.
 6. INFORMATION PRESENTED HERE IS THE RESULTS OF A DESKTOP ANALYSIS AND HAS NOT BEEN GROUND-TRUTHED.
 7. VISUAL ANALYSIS HAS BEEN LIMITED TO JEFFERSON TOWNSHIP ONLY.

BASE MAP: ESRI "WORLD IMAGERY" MAP SERVICE, 2023
 DATA SOURCES: TRC, USGS, NOAA

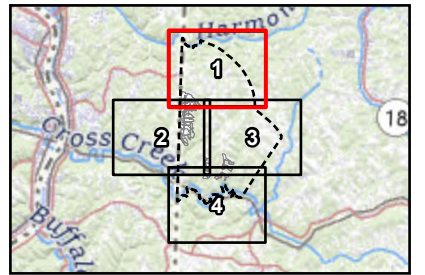


PROJECT: CORNERSTONE SOLAR, LLC	
CORNERSTONE SOLAR JEFFERSON TOWNSHIP, WASHINGTON COUNTY, PA	
TITLE: POTENTIAL VISIBILITY WITH VIEWPOINTS	
DRAWN BY: M. BILLINGS	PROJ. NO.: 606374
CHECKED BY: S. DEHAINAUT	FIGURE 1 OVERVIEW MAP
APPROVED BY: C. WAGNER	
DATE: OCTOBER 2025	
3 CORPORATE DRIVE SUITE 202 CLIFTON PARK, NY 12065 PHONE: 518.348.1190	
FILE:	Revised_Viewshed_Figures_20251017.aprx

Coordinate System: NAD 1983 StatePlane Pennsylvania South FIPS 3702 Feet, Map Rotation: 0
 Drawn By: MBILLINGS on 10/29/2025, 17:04:30 PM, File Path: T:\PROJECTS\REV, Renewable\606374_CornerstoneSolar\VISUAL\07_GIS\01_APPX\Revised_Visshed_Figures_20251017.aprx, Layout Name: Fig1_Cornerstone_Revised_Visshed_MapSeries_NorthSouth_11x17L_20251017



- LEGEND**
- SIMULATION VIEWPOINT
 - PHOTO VIEWPOINT
 - PROPOSED ARRAY FENCING
 - 2-MILE STUDY AREA WITHIN JEFFERSON TOWNSHIP
 - PROPOSED ARRAY LOCATION
 - MUNICIPAL BOUNDARY
 - POTENTIAL VISIBILITY OF NORTHERN PROJECT (PANELS, INVERTERS, FENCE)
 - POTENTIAL VISIBILITY OF SOUTHERN PROJECT AREA (PANELS, INVERTERS, FENCE)



NOTES:
 VISUAL ANALYSIS HAS BEEN LIMITED TO JEFFERSON TOWNSHIP ONLY.

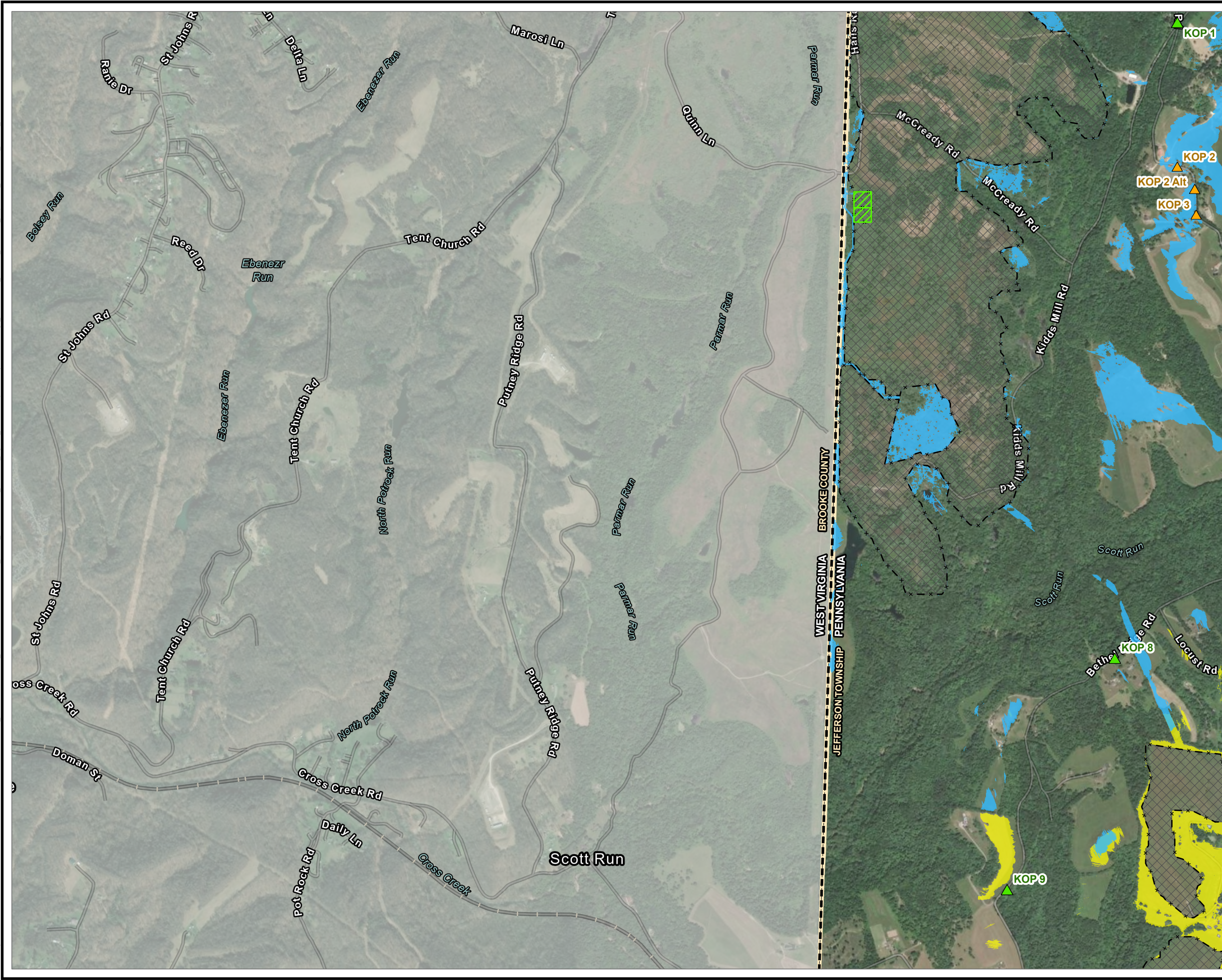
BASE MAP: ESRI "WORLD IMAGERY" MAP SERVICE, 2023
 DATA SOURCES: TRC, USGS, NOAA

1:18,000
 1 INCH = 1,500 FEET
 0 750 1,500 FEET

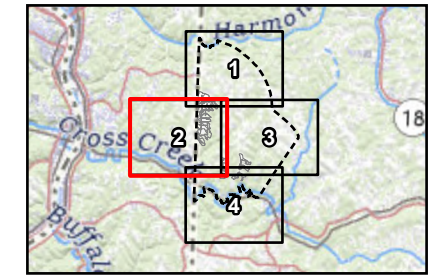


PROJECT: CORNERSTONE SOLAR, LLC	
CORNERSTONE SOLAR JEFFERSON TOWNSHIP, WASHINGTON COUNTY, PA	
TITLE: POTENTIAL VISIBILITY WITH VIEWPOINTS	
DRAWN BY: M. BILLINGS	PROJ. NO.: 606374
CHECKED BY: S. DEHAINAUT	FIGURE 1 SHEET 1 of 4
APPROVED BY: C. WAGNER	
DATE: OCTOBER 2025	
3 CORPORATE DRIVE SUITE 202 CLIFTON PARK, NY 12065 PHONE: 518.348.1190	
FILE: Revised_Visshed_Figures_20251017.aprx	

Coordinate System: NAD 1983 StatePlane Pennsylvania South FIPS 3702 Feet, Map Rotation: 0
 - Saved By: MBILLINGS on 10/29/2025, 17:04:30 PM, File Path: T:\PROJECTS\REV_ Renewables\606374_CornerstoneSolar\VISUAL\07_GIS\01_APPX\Revised_Viewshed_Figures_20251017.aprx, Layout Name: Fig1_Cornerstone_Revised_Viewshed_MapSeries_NorthSouth_11x17L_20251017



- LEGEND**
- SIMULATION VIEWPOINT
 - PHOTO VIEWPOINT
 - PROPOSED SUBSTATION/SWITCHYARD
 - PROPOSED ARRAY FENCING
 - 2-MILE STUDY AREA WITHIN JEFFERSON TOWNSHIP
 - PROPOSED ARRAY LOCATION
 - PROPOSED LANDSCAPING
 - MUNICIPAL BOUNDARY
 - POTENTIAL VISIBILITY OF NORTHERN PROJECT (PANELS, INVERTERS, FENCE)
 - POTENTIAL VISIBILITY OF SOUTHERN PROJECT AREA (PANELS, INVERTERS, FENCE)



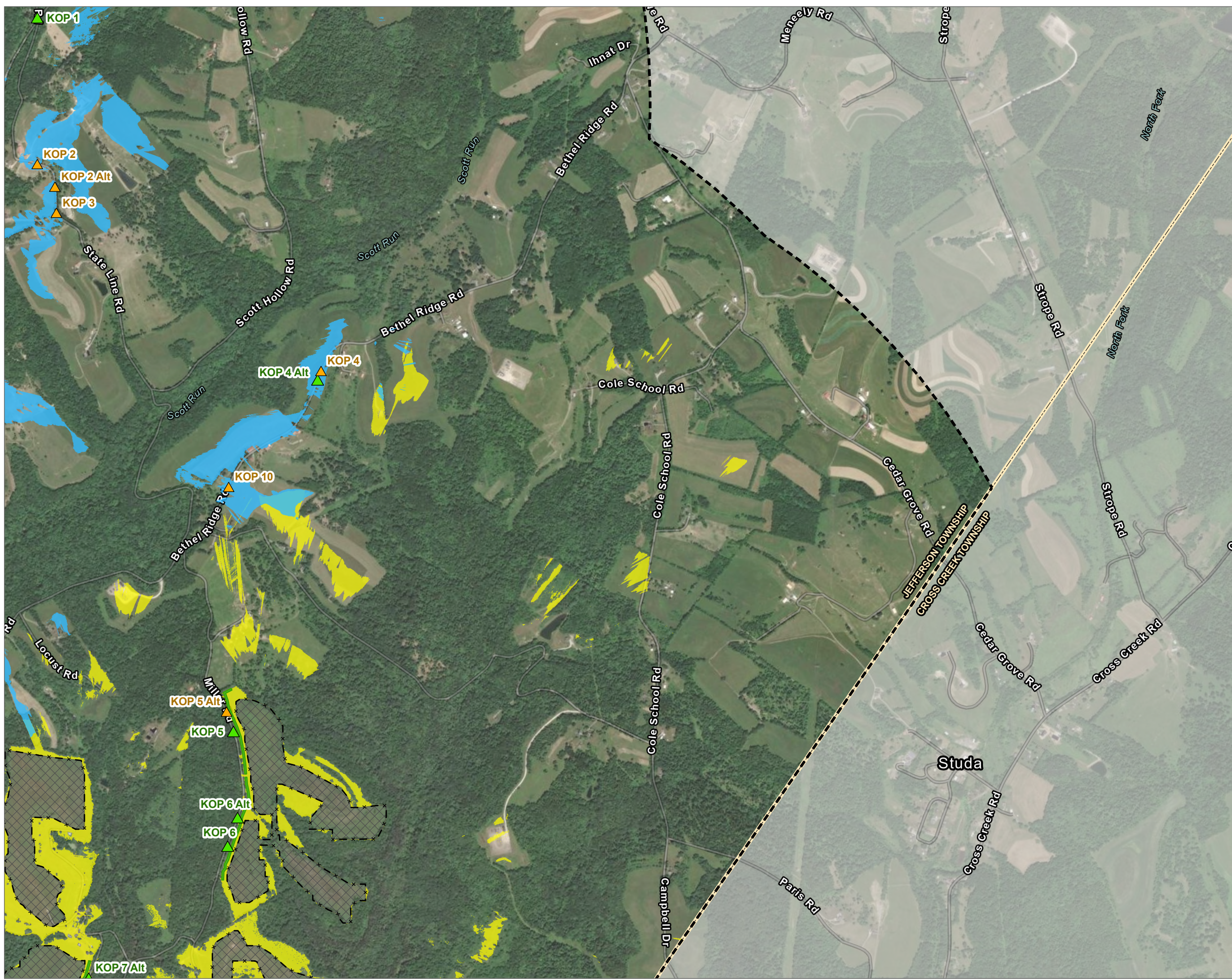
NOTES:
 VISUAL ANALYSIS HAS BEEN LIMITED TO JEFFERSON TOWNSHIP ONLY.

BASE MAP: ESRI "WORLD IMAGERY" MAP SERVICE, 2023
 DATA SOURCES: TRC, USGS, NOAA

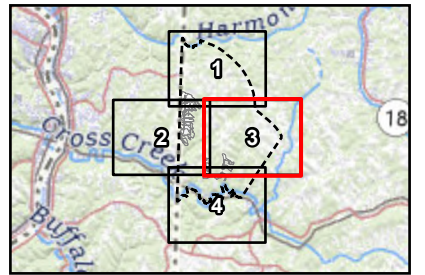
1:18,000
 1 INCH = 1,500 FEET

PROJECT: CORNERSTONE SOLAR, LLC	
CORNERSTONE SOLAR JEFFERSON TOWNSHIP, WASHINGTON COUNTY, PA	
TITLE: POTENTIAL VISIBILITY WITH VIEWPOINTS	
DRAWN BY: M. BILLINGS	PROJ. NO.: 606374
CHECKED BY: S. DEHAINAUT	FIGURE 1 SHEET 2 of 4
APPROVED BY: C. WAGNER	
DATE: OCTOBER 2025	
3 CORPORATE DRIVE SUITE 202 CLIFTON PARK, NY 12065 PHONE: 518.348.1190	
FILE:	Revised_Viewshed_Figures_20251017.aprx

Coordinate System: NAD 1983 StatePlane Pennsylvania South FIPS 3702 Feet, Map Rotation: 0
 - Saved By: MBILLINGS on 10/29/2025, 17:04:30 PM, File Path: T:\PROJECTS\REVIEWS\Renewable\606374_CornerstoneSolar\VISUAL\07_GIS\01_APP\REVISED_Viewshed_Figures_20251017.aprx, Layout Name: Fig1_Cornerstone_Solar_South_11x17L_20251017



- LEGEND**
- SIMULATION VIEWPOINT
 - PHOTO VIEWPOINT
 - PROPOSED ARRAY FENCING
 - 2-MILE STUDY AREA WITHIN JEFFERSON TOWNSHIP
 - PROPOSED ARRAY LOCATION
 - PROPOSED LANDSCAPING
 - MUNICIPAL BOUNDARY
 - POTENTIAL VISIBILITY OF NORTHERN PROJECT (PANELS, INVERTERS, FENCE)
 - POTENTIAL VISIBILITY OF SOUTHERN PROJECT AREA (PANELS, INVERTERS, FENCE)



NOTES:
 VISUAL ANALYSIS HAS BEEN LIMITED TO JEFFERSON TOWNSHIP ONLY.

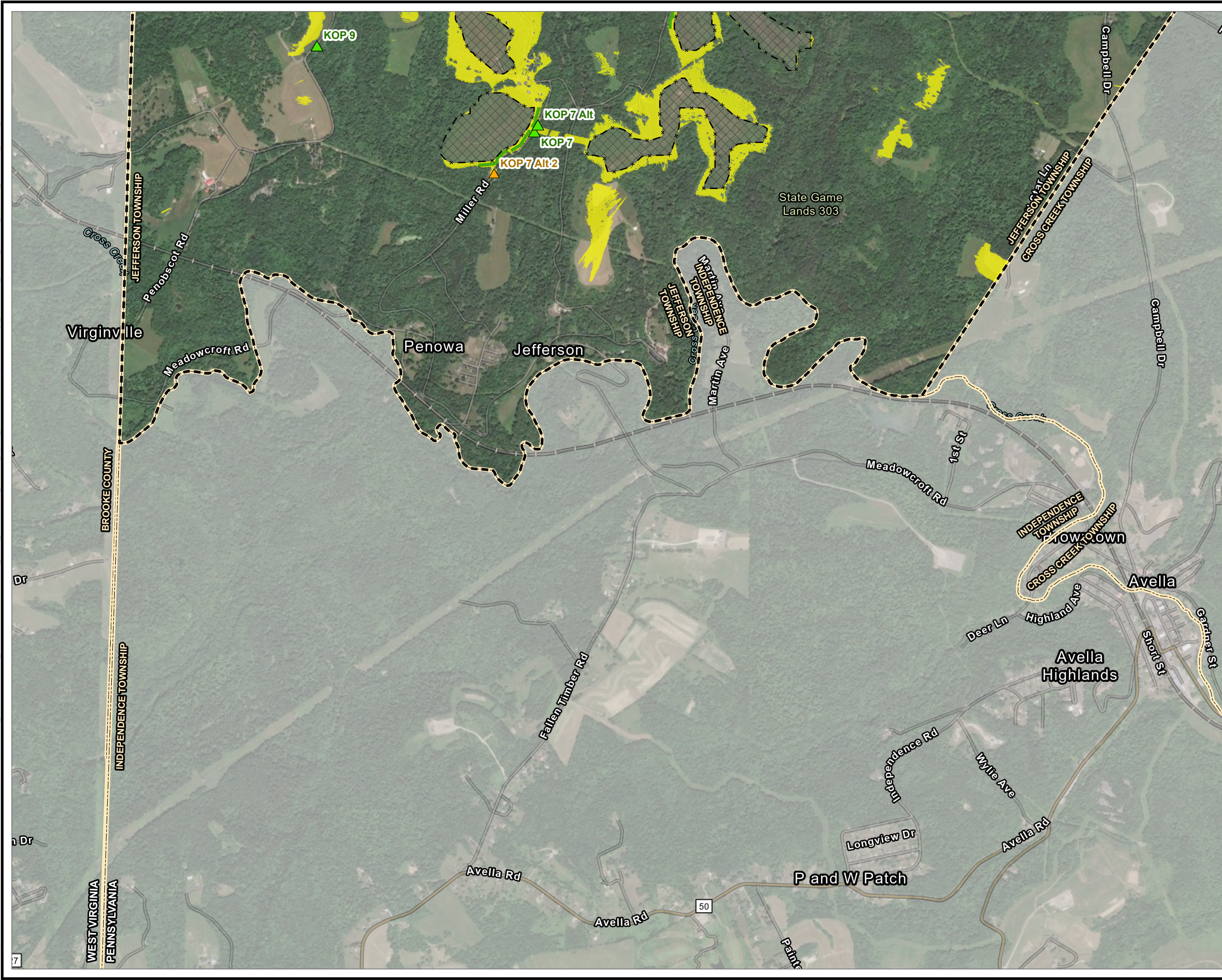
BASE MAP: ESRI "WORLD IMAGERY" MAP SERVICE, 2023
 DATA SOURCES: TRC, USGS, NOAA

1:18,000
 1 INCH = 1,500 FEET
 0 750 1,500 FEET

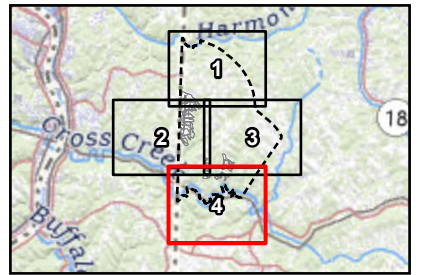


PROJECT: CORNERSTONE SOLAR, LLC	
CORNERSTONE SOLAR JEFFERSON TOWNSHIP, WASHINGTON COUNTY, PA	
TITLE: POTENTIAL VISIBILITY WITH VIEWPOINTS	
DRAWN BY: M. BILLINGS	PROJ. NO.: 606374
CHECKED BY: S. DEHAINAUT	FIGURE 1 SHEET 3 of 4
APPROVED BY: C. WAGNER	
DATE: OCTOBER 2025	
3 CORPORATE DRIVE SUITE 202 CLIFTON PARK, NY 12065 PHONE: 518.348.1190	
FILE:	Revised_Viewshed_Figures_20251017.aprx

Coordinate System: NAD 1983 StatePlane Pennsylvania South FIPS 3702 Feet, Map Rotation: 0
 Saved By: MBILLINGS on 10/29/2025, 17:04:30 PM, File Path: T:\PROJECTS\REV, Renewable\606374_CornerstoneSolar\VISUAL\07_GIS\01_APPX\Revised_Visshed_Figures_20251017.aprx, Layout Name: Fig1_Cornerstone_Revised_Visshed_MapSeries_NorthSouth_11x17L_20251017



- LEGEND**
- SIMULATION VIEWPOINT
 - PHOTO VIEWPOINT
 - PROPOSED ARRAY FENCING
 - 2-MILE STUDY AREA WITHIN JEFFERSON TOWNSHIP
 - PROPOSED ARRAY LOCATION
 - PROPOSED LANDSCAPING
 - MUNICIPAL BOUNDARY
 - POTENTIAL VISIBILITY OF NORTHERN PROJECT (PANELS, INVERTERS, FENCE)
 - POTENTIAL VISIBILITY OF SOUTHERN PROJECT AREA (PANELS, INVERTERS, FENCE)



NOTES:
 VISUAL ANALYSIS HAS BEEN LIMITED TO JEFFERSON TOWNSHIP ONLY.

BASE MAP: ESRI "WORLD IMAGERY" MAP SERVICE, 2023
 DATA SOURCES: TRC, USGS, NOAA

1:18,000
 1 INCH = 1,500 FEET
 0 750 1,500 FEET



PROJECT: CORNERSTONE SOLAR, LLC	
CORNERSTONE SOLAR JEFFERSON TOWNSHIP, WASHINGTON COUNTY, PA	
TITLE: POTENTIAL VISIBILITY WITH VIEWPOINTS	
DRAWN BY: M. BILLINGS	PROJ. NO.: 606374
CHECKED BY: S. DEHAINAUT	FIGURE 1 SHEET 4 of 4
APPROVED BY: C. WAGNER	
DATE: OCTOBER 2025	
3 CORPORATE DRIVE SUITE 202 CLIFTON PARK, NY 12065 PHONE: 518.348.1190	
FILE: Revised_Visshed_Figures_20251017.aprx	